

# Venable Announces New Co-Chairs Within Its Litigation Division

Venable LLP is pleased to announce that New York partner Nicholas M. Reiter and Los Angeles partner Celeste Brecht have been elevated to lead their respective litigation groups. Specifically, Reiter has joined Michael J. Volpe as a co-chair of the firm's national Labor and Employment Practice, and Brecht has joined Daniel P. Hoffer as a co-chair of the firm's West Coast Litigation Group.

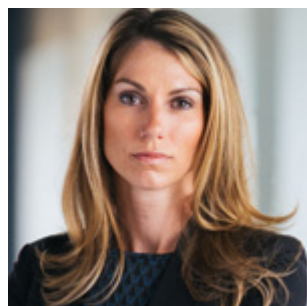
Geoffrey R. Garinther, chair of the firm's Litigation Division, said, "We are fortunate to have Nick and Celeste, who are well respected among their peers and clients, join our leadership ranks within the Litigation Division. Both of them have demonstrated exemplary work representing clients in complex matters across a variety of forums, acting as trusted advisors, and expanding the capabilities and reach of two thriving practice groups."



Reiter joined Venable in 2011 and represents employers in employment and traditional labor matters. He has obtained successful jury verdicts as a first-chair trial lawyer and negotiated new collective bargaining agreements with labor unions. Reiter regularly defends and advises employers in the financial services, hospitality, real estate, and healthcare industries, including multinational hotel chains, restaurant groups, investment banks, and hospitals.

When asked about his new co-chair role, Reiter said, "I am grateful for the opportunity to help lead such a terrific group of employment lawyers. There has been no shortage of

legal developments for employers lately, and we expect that trend will continue as federal, state, and local legislatures create new rules for the American workplace. Our Labor and Employment Practice will remain focused on staying ahead of the curve and advising our clients on best practices for managing their workforces.”



Brecht is a first-chair trial attorney who focuses on complex civil disputes for clients in the pharmaceutical, healthcare, consumer products, media and entertainment, and transportation industries. In addition to trial work, Brecht has served as national counsel, managing complex litigation from inception through appeal. In connection with her new role, Brecht said, “Since joining Venable in 2013, we’ve doubled the size of the Los Angeles office and our litigation group while maintaining our collaborative culture. We have a deep bench of incredibly talented litigators who are tireless advocates for our clients, and I look forward to supporting this dynamic group as we continue to level up in the years to come.”

Venable LLP is an American Lawyer Global 100 law firm headquartered in Washington, DC that serves as primary counsel to a worldwide clientele of large and mid-sized organizations, nonprofits, high-net-worth entrepreneurs, and individuals. With more than 850 professionals in locations across the country, including California, Delaware, Maryland, New York, Virginia, and Washington, DC, the firm strategically advances its clients’ objectives in the U.S. and around the globe. Venable advises clients on a broad range of business and regulatory law, legislative affairs, complex litigation, and the full range of intellectual property disciplines. For more information, please visit [www.venable.com](http://www.venable.com).